



STRATO[®]

CEMENT TEXTURE & VELOURS

EDITION
1.1

WALL FINISH PROFESSIONALS

TAIWAN • MALAYSIA • THAILAND



*Matte
& smooth*

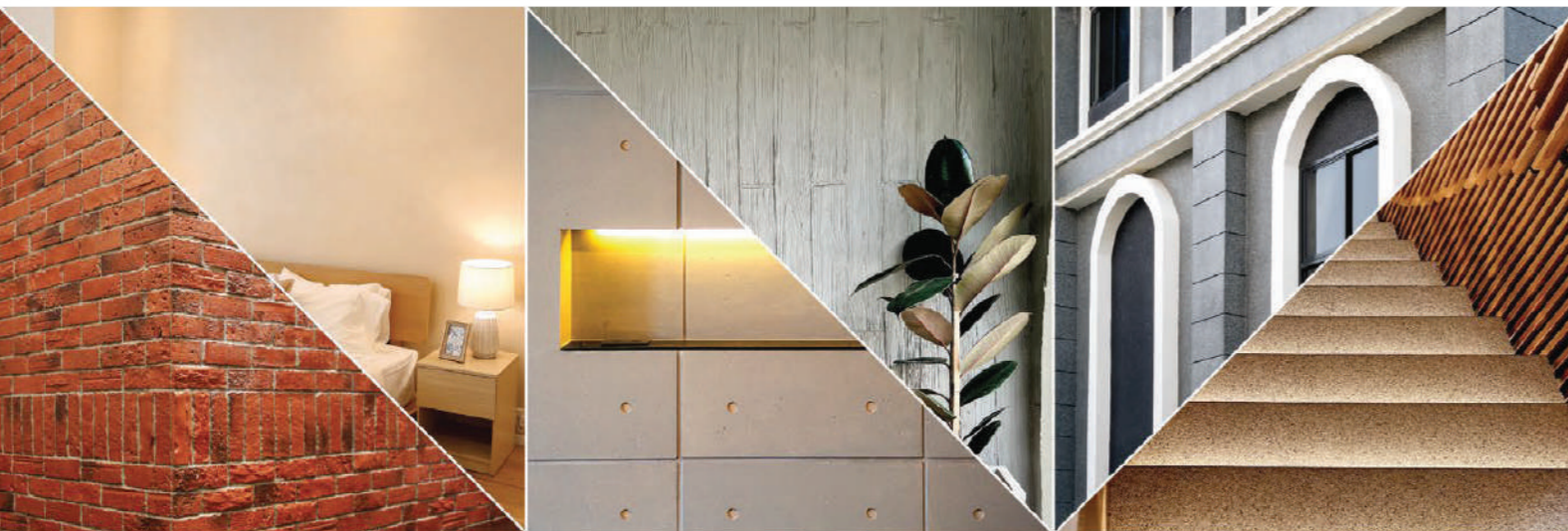
INTERIOR
TEXTURED PAINTS

Complies to the
American California
Proposition 65 Standard



WALL FINISH
PROFESSIONALS.

SINCE
1977



BRICK & STONE VENEER • TEXTURED PAINT • KASTPANEL • ECES • TEXTURE COATING • PEBBLE STONE COATING



Instagram and Facebook icons followed by 'suzuka.group'

Singapore Offices 62 Ubi Road 1, Oxley Bizhub 2, #01-41, Singapore 408734
20 Depot Lane #01-05, Singapore 109763
t. +65 6926 2610 m. +65 8788 6890 (WhatsApp only)

Malaysia Offices Unit A-01-24, Plaza Bukit Jalil (Aurora Place), No. 1, Persiaran Jalil 1, Bandar Bukit Jalil, 57000 Kuala Lumpur Malaysia
JB1: 6 Jalan Ekoperniagaan 1/28, Taman Ekoperniagaan, 81100 Johor Bahru, Johor, Malaysia
JB2: 27 Jalan Ekoperniagaan 2/7, Taman Ekoperniagaan, 81100 Johor Bahru, Johor, Malaysia
t. +60 7511 4788 m. +60 11 7019 0428 (WhatsApp only)



SCT & SVL-E1.1-2402

* Photos of the products shown in this catalogue may vary in color due to lighting condition & printing. We suggest you examine actual product samples before ordering.

STRATO®

Matte & smooth

1

STRATO® CEMENT TEXTURE

Page 3 - 12

2

STRATO® VELOURS

Page 13 - 26



SUZUKA® WALL SEALER PRO

“ Make your
wall finishes
last longer! ”



Packing Size: **1L** **5L** **20L**

Superior primer for concrete, skimmed or masonry surfaces.

This sealer that has good substrate penetration abilities to increase adhesion of product to prevent chalking or peeling off.

It has excellent alkaline resistance properties that can prevent efflorescence. It is an ideal base coat for any SUZUKA® or any wall finish products.

Coverage	Drying Time (hour)	
6.5 - 8.5 m ² /l/coat	Surface Dry : 1	Substrate Temperature: 23°C - 26°C
	Hard Dry : 5	
	Recoating : 5	

Features:

- Excellent alkaline resistance to prevent efflorescence.
- Good for new walls and repainting.
- Prevents skim coat from chalking & peeling off.
- Extremely good penetration.
- Excellent adhesion.
- Exterior and interior use.
- Applicable with brush, roller or spray gun.

Suitable for:

- Masonry wall
- Brickwork
- Plaster
- Skimmed Coat
- Asbestos free substrate

Airless Spray		
Nozzle	Spray Angle Degree	Pressure
1.8 - 2.0 mm	65° - 80°	210 psi/150kg/cm²

Create two different patterns with
SCT or SVL using different tools and techniques!



Trowel Pattern

Application
with trowel.



Piccolo Pattern

Application
with piccolo tool.

STRATO[®] Cement TEXTURE

SCT



SCT 301 - 310

Create everlasting look with Strato[®] Cement Texture. Whether you are going for the industrial, scandinavian, contemporary or minimalistic style, the backdrop of the cement texture can complete the look.

Create two different patterns with Strato[®] Cement Texture using different tools and techniques!

Appearance

Low Sheen		High Sheen
Smooth Texture		Rough Texture
Matte		Metallic

Features



Low VOC & Odor



Green Choice, Water Based & Eco-friendly



Formaldehyde & Lead Free



Crack Resistant



Anti-chalking & Efflorescence



Easy Application & DIY Friendly



Applicable on Ceiling



Easy to Touch Up



Easy Maintenance



Matte Finishing

- Interior use only
- Complies to the American California Proposition 65 Standard

SCT
**Trowel
 Pattern**

Matte & Smooth
 Finishing.



SCT-301 Silver Grey



SCT-302 Natural Grey



SCT-303 Shark Grey



SCT-304 Granite Grey



SCT-305 Iron Grey



SCT-306 Charcoal Grey



SCT-307 Metal Grey



SCT-308 Shadow Grey



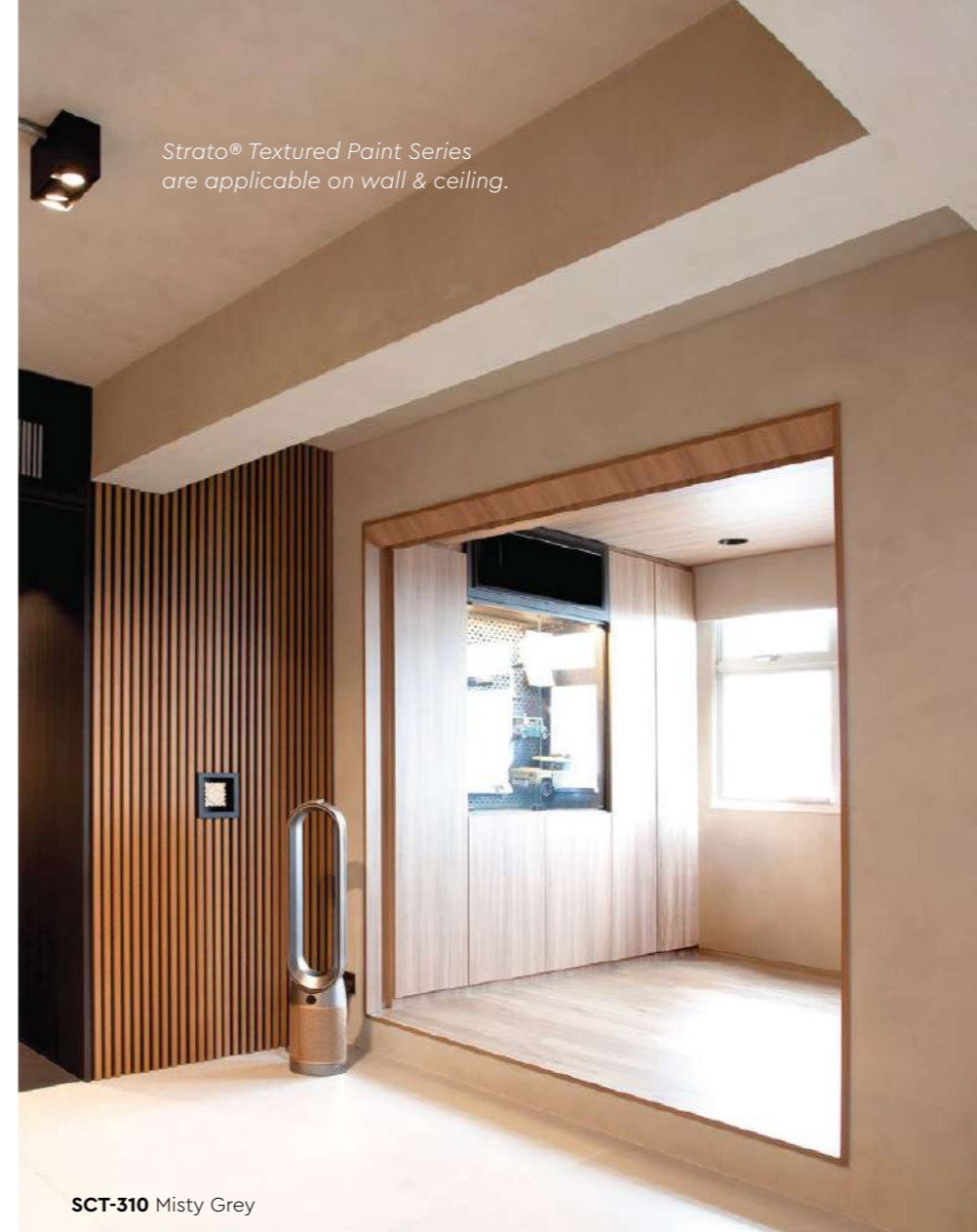
SCT-309 Ashes Grey



SCT-310 Misty Grey



SCT-311 Dove White



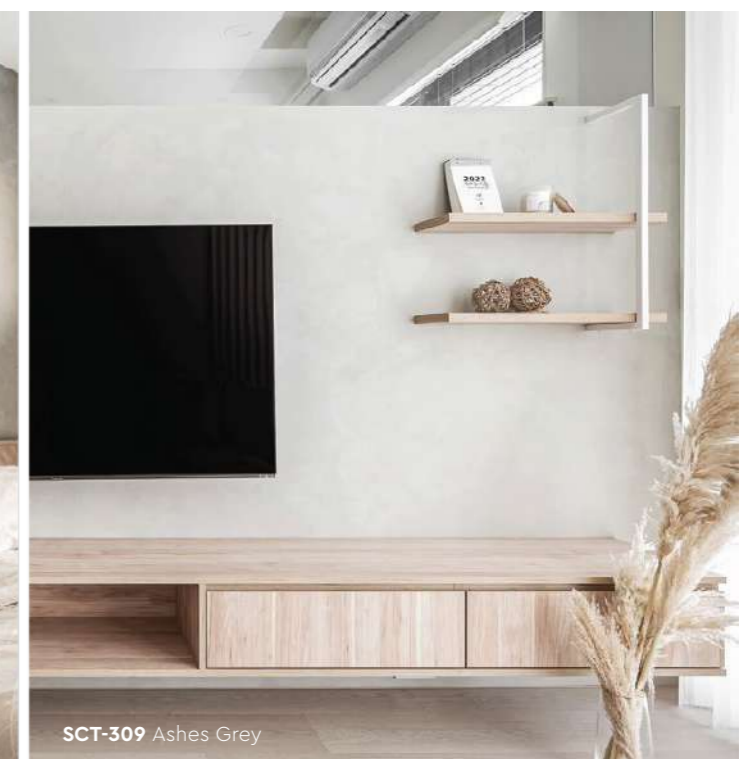
SCT-310 Misty Grey



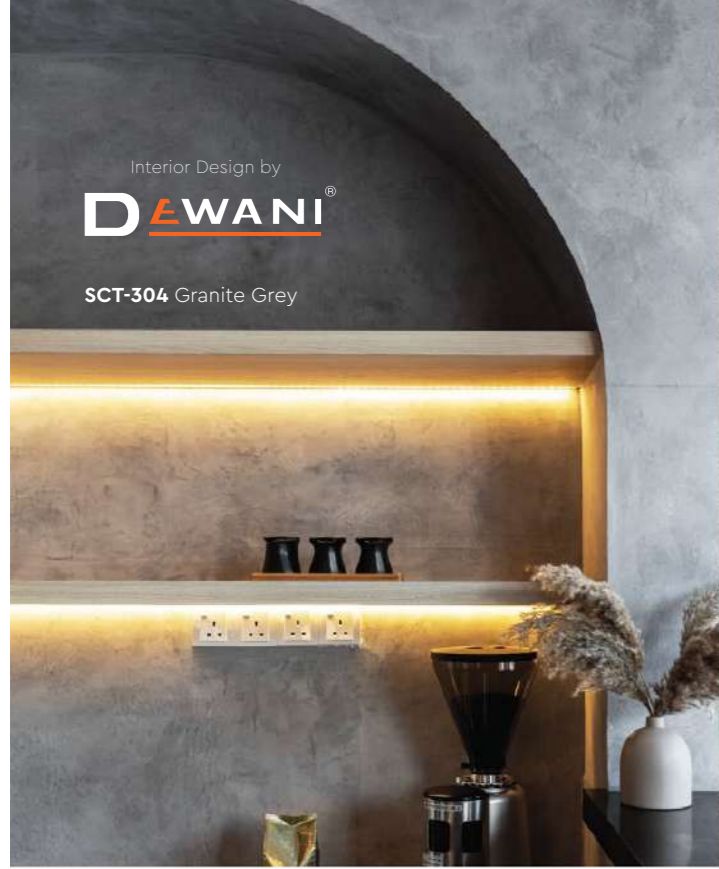
SCT-309 Ashes Grey



SCT-301 Silver Grey



SCT-309 Ashes Grey



Interior Design by
D EWANI[®]

SCT-304 Granite Grey



SCT-301 Silver Grey



Trowel Pattern

Application Video



Application Technique

Preparation:

- Cover the edges of surface that won't be painted by masking it with tape, paper or plastic.
- Clean up the wall surface to ensure it is free from dirt and dust.



1 Primer

Roll 2 layers of primer on the entire surface. Allow 30 minutes to dry between the layers. (The primer can be diluted with maximum 5% of clean water)

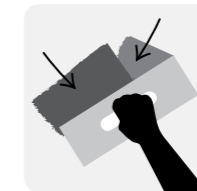
Tool: Roller



2 Sanding

Sand the entire surface in circular motion to ensure the surface is smooth.

Tool: 600 Grit Sand Paper



3 Texture Coat

Scrape texture coat randomly to create pattern. Ensure the whole surface area is covered. Then apply second layer.

(use a larger trowel for a larger pattern, a smaller trowel for smaller pattern)

Tool: Stainless Steel Trowel



4 Sanding (Optional)

Sand the entire surface in circular motion to enhance the pattern.

Tool: 600 Grit Sand Paper



5 Topcoat

Apply SR-Top 1 on entire surface using a dry sponge in circular motions.

IMPORTANT: Use a clean and dry sponge/cleaning cloth to wipe the excess topcoat before it dries to avoid the sponge marks.

Tool: Sponge / Cleaning Cloth

IMPORTANT:

Color may vary on application technique & amount of material used.



Packing Data

1 L	Primer
1 L	Texture Coat
0.5 L	Topcoat (SR-Top 1)

Coverage (per set)

WALL	6 - 7 sqm
CEILING	5 - 6 sqm



Tools: Trowel/Scraper, Roller, Sand Paper (600 Grit), Sponge & Cleaning Cloth

SCT
**Piccolo
 Pattern**

Matte & Smooth
 Finishing.



SCT-301 Silver Grey



SCT-302 Natural Grey



SCT-303 Shark Grey



SCT-304 Granite Grey



SCT-305 Iron Grey



SCT-306 Charcoal Grey



SCT-307 Metal Grey



SCT-308 Shadow Grey



SCT-309 Ashes Grey



SCT-310 Misty Grey



SCT-311 Dove White



SCT-302 Natural Grey



SCT-306 Charcoal Grey



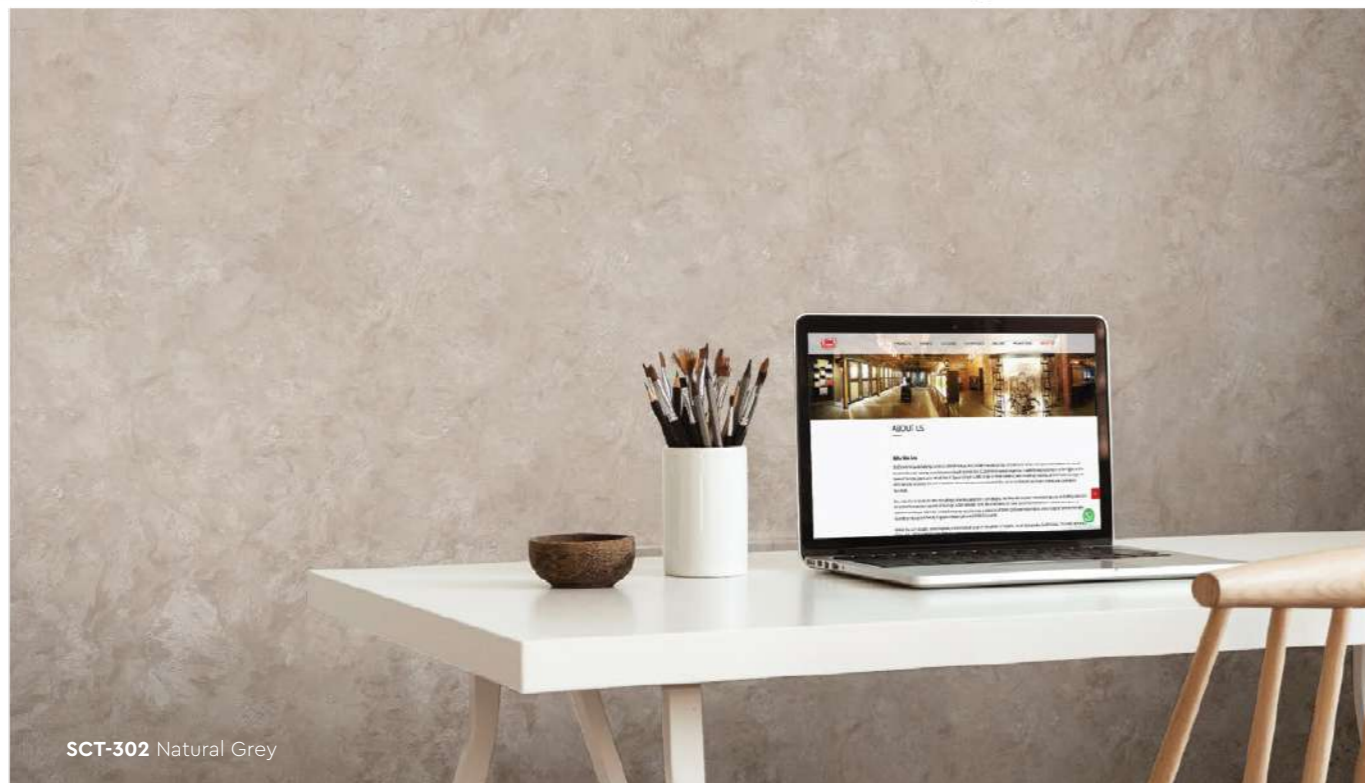
SCT-301 Silver Grey



SCT-309 Ashes Grey



SCT-304 Granite Grey



SCT-302 Natural Grey

Piccolo Pattern

Application Technique

Application Video



Preparation:

- Cover the edges of surface that won't be painted by masking it with tape, paper or plastic.
- Clean up the wall surface to ensure it is free from dirt and dust.



1 Primer

Roll 2 layers of primer on the entire surface. Allow 30 minutes to dry between the layers. (The primer can be diluted with maximum 5% of clean water)

Tool: Roller



2 Sanding

Sand the entire surface in circular motion to ensure the surface is smooth.

Tool: 600 Grit Sand Paper



3 Texture Coat

Step A : Trowel

Scrape texture coat evenly onto the surface.

Tool: Stainless Steel Trowel



Step B : Piccolo

Use piccolo tool to create swirl texture effects by moving with random circular motion.

Tool: Piccolo Tool



4 Topcoat

Apply SR-Top 1 on entire surface using a dry sponge in circular motions.

IMPORTANT: Use a clean and dry sponge/cleaning cloth to wipe the excess topcoat before it dries to avoid the sponge marks.

Tool: Sponge / Cleaning Cloth

IMPORTANT:

Color may vary on application technique & amount of material used.



Packing Data

1 L	Primer
1 L	Texture Coat
0.5 L	Topcoat (SR-Top 1)

Coverage (per set)

WALL	6 - 7 sqm
CEILING	5 - 6 sqm



Tools: Trowel, Piccolo, Roller, Sand Paper (600 Grit), Sponge & Cleaning Cloth

STRATO® Velours



SVL



SVL 401 - 426

Rich velvety layers of color to enhance the interior space. Each color brings out a different mood and ambience, find a color that matches your personality

Create two different patterns with Strato® Velours using different tools and techniques!

Appearance

Low Sheen		High Sheen
Smooth Texture		Rough Texture
Matte		Metallic

Features



Low VOC & Odor



Green Choice, Water Based & Eco-friendly



Formaldehyde & Lead Free



Crack Resistant



Anti-chalking & Efflorescence



Easy Application & DIY Friendly



Applicable on Ceiling



Easy to Touch Up



Easy Maintenance



Matte Finishing

- Interior use only
- Complies to the American California Proposition 65 Standard

SVL
**Trowel
 Pattern**

Matte & Smooth
 Finishing.



SVL-401 Cloudy Grey



SVL-402 Mushroom Beige



SVL-403 Hazel Wood



SVL-404 Summer Sahara



SVL-405 Walnut Leather



SVL-406 Brocade Blue



SVL-407 Deep Marine



SVL-408 Royal Denim



SVL-409 Violet Memory



SVL-410 Rosy Mauve



SVL-411 Frosted Mint



SVL-406 Brocade Blue



SVL-401 Cloudy Grey



SVL-404 Summer Sahara



SVL-410 Rosy Mauve



SVL-417 Vanilla Cream



SVL-417 Vanilla Cream



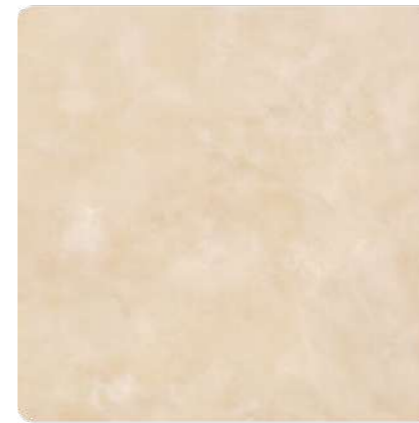
SVL-415 Lime Mist



SVL-416 Flamingo Blush



SVL-417 Vanilla Cream



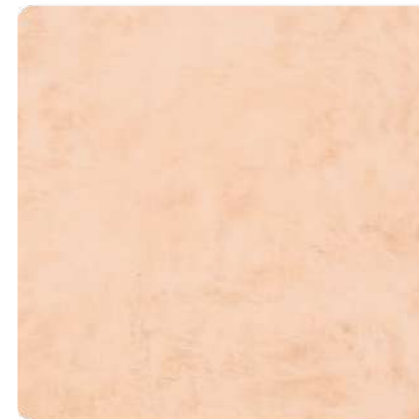
SVL-418 Oat Beige



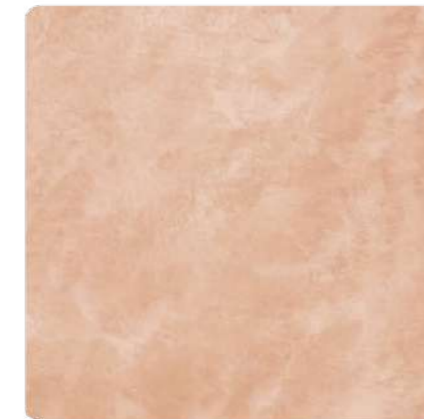
SVL-419 Blush Cream



SVL-420 Wheat Beige



SVL-421 Light Apricot



SVL-422 Coral Peach



SVL-423 Lime Citrus



SVL-412 Vivid Emerald



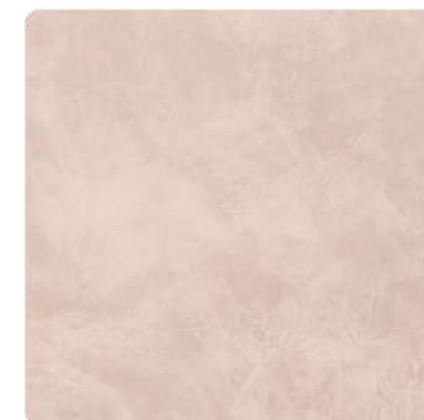
SVL-413 Hunter Green



SVL-414 Herbal Garden



SVL-424 Dried Basil



SVL-425 Mauve Chalk



SVL-426 Ivory Cream



SVL-413 Hunter Green



SVL-425 Mauve Chalk



SVL-408 Royal Denim



SVL-408 Royal Denim

Trowel Pattern

Application Technique

Application Video



Preparation:

- Cover the edges of surface that won't be painted by masking it with tape, paper or plastic.
- Clean up the wall surface to ensure it is free from dirt and dust.



1 Primer

Roll 2 layers of primer on the entire surface. Allow 30 minutes to dry between the layers. (The primer can be diluted with maximum 5% of clean water)

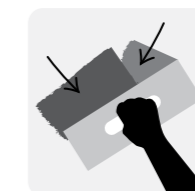
Tool: Roller



2 Sanding

Sand the entire surface in circular motion to ensure the surface is smooth.

Tool: 600 Grit Sand Paper



3 Texture Coat

Scrape texture coat randomly to create pattern. Ensure the whole surface area is covered. Then apply second layer.

(use a larger trowel for a larger pattern, a smaller trowel for smaller pattern)

Tool: Stainless Steel Trowel



4 Sanding (Optional)

Sand the entire surface in circular motion to enhance the pattern.

Tool: 600 Grit Sand Paper



5 Topcoat

Apply SR-Top 1 on entire surface using a dry sponge in circular motions.

IMPORTANT: Use a clean and dry sponge/cleaning cloth to wipe the excess topcoat before it dries to avoid the sponge marks.

Tool: Sponge / Cleaning Cloth

IMPORTANT:

Color may vary on application technique & amount of material used.

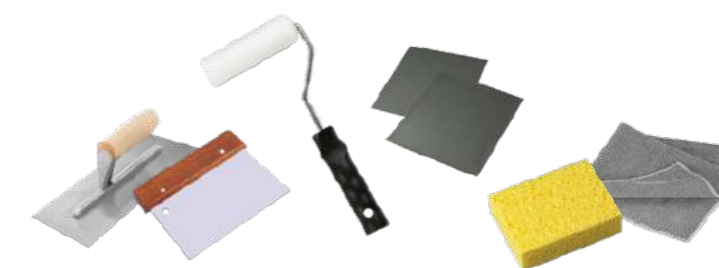


Packing Data

1 L	Primer
1 L	Texture Coat
0.5 L	Topcoat (SR-Top 1)

Coverage (per set)

WALL	6 - 7 sqm
CEILING	5 - 6 sqm



Tools: Trowel/Scraper, Roller, Sand Paper (600 Grit), Sponge & Cleaning Cloth

SVL Piccolo Pattern

Matte & Smooth
Finishing.



SVL-401 Cloudy Grey



SVL-402 Mushroom Beige



SVL-403 Hazel Wood



SVL-404 Summer Sahara



SVL-405 Walnut Leather



SVL-406 Brocade Blue



SVL-407 Deep Marine



SVL-408 Royal Denim



SVL-409 Violet Memory



SVL-410 Rosy Mauve



SVL-411 Frosted Mint



SVL-401 Cloudy Grey



SVL-406 Brocade Blue



SVL-402 Mushroom Beige



SVL-414 Herbal Garden



SVL-415 Lime Mist



SVL-416 Flamingo Blush



SVL-417 Vanilla Cream



SVL-418 Oat Beige



SVL-419 Blush Cream



SVL-420 Wheat Beige



SVL-421 Light Apricot



SVL-422 Coral Peach



SVL-423 Lime Citrus



SVL-412 Vivid Emerald



SVL-413 Hunter Green



SVL-414 Herbal Garden



SVL-424 Dried Basil



SVL-425 Mauve Chalk



SVL-426 Ivory Cream



SVL-420 Wheat Beige



SVL-425 Mauve Chalk



SVL-422 Coral Peach

Piccolo Pattern

Application Technique

Application Video



Preparation:

- Cover the edges of surface that won't be painted by masking it with tape, paper or plastic.
- Clean up the wall surface to ensure it is free from dirt and dust.



1 Primer

Roll 2 layers of primer on the entire surface. Allow 30 minutes to dry between the layers. (The primer can be diluted with maximum 5% of clean water)

Tool: Roller



2 Sanding

Sand the entire surface in circular motion to ensure the surface is smooth.

Tool: 600 Grit Sand Paper



3 Texture Coat

Step A : Trowel

Scrape texture coat evenly onto the surface.

Tool: Stainless Steel Trowel



Step B : Piccolo

Use piccolo tool to create swirl texture effects by moving with random circular motion.

Tool: Piccolo Tool



4 Topcoat

Apply SR-Top 1 on entire surface using a dry sponge in circular motions.

IMPORTANT: Use a clean and dry sponge/cleaning cloth to wipe the excess topcoat before it dries to avoid the sponge marks.

Tool: Sponge / Cleaning Cloth

IMPORTANT:

Color may vary on application technique & amount of material used.



Packing Data

1 L	Primer
1 L	Texture Coat
0.5 L	Topcoat (SR-Top 1)

Coverage (per set)

WALL	6 - 7 sqm
CEILING	5 - 6 sqm



Tools: Trowel, Piccolo, Roller, Sand Paper (600 Grit), Sponge & Cleaning Cloth