



# STRATO®

## Metallics

EDITION  
02

### WALL FINISH PROFESSIONALS

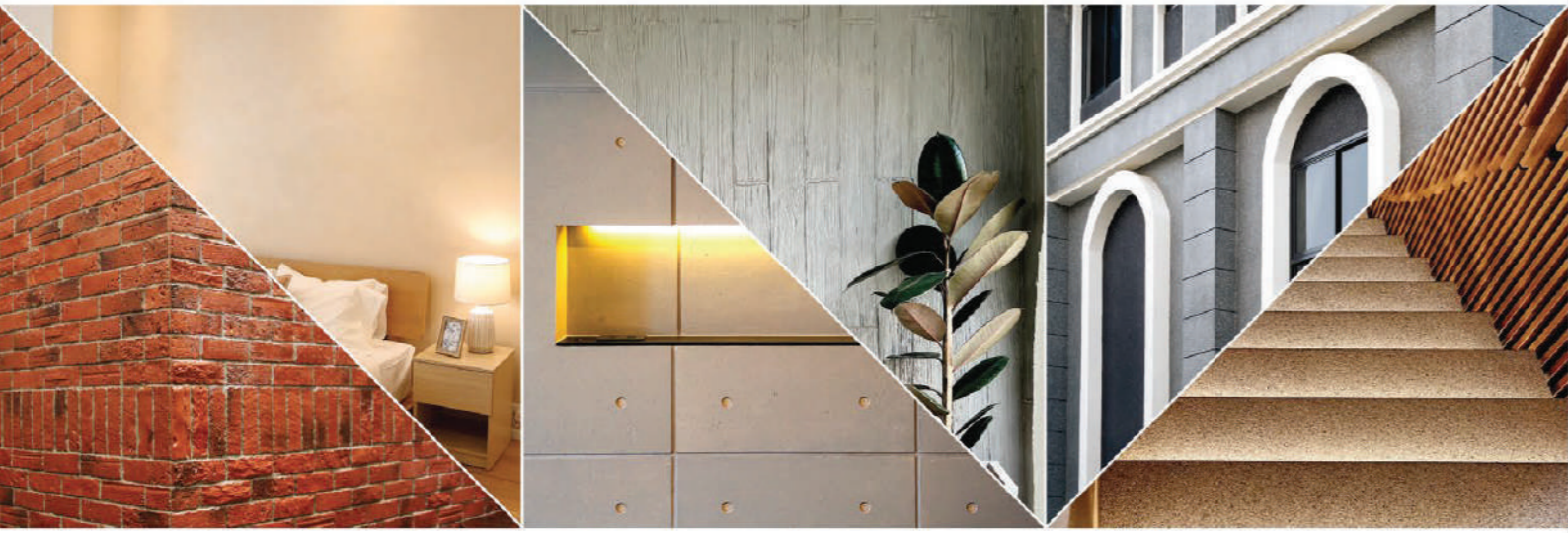
TAIWAN • MALAYSIA • THAILAND

### STRATO® MERINO & ORGANZA

INTERIOR  
TEXTURED PAINTS

WALL FINISH  
PROFESSIONALS.

SINCE  
1977



BRICK & STONE VENEER • TEXTURED PAINT • KASTPANEL • ECES • TEXTURE COATING • PEBBLE STONE COATING



Instagram and Facebook icons followed by [suzuka.group](https://www.suzuka.group)

**Singapore Offices** 62 Ubi Road 1, Oxley Bizhub 2, #01-41, Singapore 408734  
20 Depot Lane #01-05, Singapore 109763  
t. +65 6926 2610 m. +65 8788 6890 (WhatsApp only)

**Malaysia Offices** Unit A-01-24, Plaza Bukit Jalil (Aurora Place), No. 1, Persiaran Jalil 1, Bandar Bukit Jalil,  
57000 Kuala Lumpur Malaysia  
JB1:  
6 Jalan Ekoperniagaan 1/28, Taman Ekoperniagaan, 81100 Johor Bahru, Johor, Malaysia  
JB2:  
27 Jalan Ekoperniagaan 2/7, Taman Ekoperniagaan, 81100 Johor Bahru, Johor, Malaysia  
t. +60 7511 4788 m. +60 11 7019 0428 (WhatsApp only)



METALLICS-E2-2311

\* Photos of the products shown in this catalogue may vary in color due to lighting condition & printing. We suggest you examine actual product samples before ordering.



# STRATO® Metallics

1

## STRATO® MERINO

Page 3 - 10

2

## STRATO® ORGANZA

Page 11 - 18



## SUZUKA® WALL SEALER PRO

“ Make your  
wall finishes  
last longer! ”



Packing Size: **1L** **5L** **20L**

### Superior primer for concrete, skimmed or masonry surfaces.

This sealer that has good substrate penetration abilities to increase adhesion of product to prevent chalking or peeling off.

It has excellent alkaline resistance properties that can prevent efflorescence. It is an ideal base coat for any SUZUKA® or any wall finish products.

Coverage	Drying Time (hour)	
<b>6.5 - 8.5</b> m <sup>2</sup> /l/coat	Surface Dry : <b>1</b>	Substrate Temperature:
	Hard Dry : <b>5</b>	<b>23°C - 26°C</b>
	Recoating : <b>5</b>	

#### Features:

- Excellent alkaline resistance to prevent efflorescence.
- Good for new walls and repainting.
- Prevents skim coat from chalking & peeling off.
- Extremely good penetration.
- Excellent adhesion.
- Exterior and interior use.
- Applicable with brush, roller or spray gun.

#### Suitable for:

- Masonry wall
- Brickwork
- Plaster
- Skimmed Coat
- Asbestos free substrate

Airless Spray		
Nozzle	Spray Angle Degree	Pressure
<b>1.8 - 2.0 mm</b>	<b>65° - 80°</b>	<b>210 psi/150kg/cm<sup>2</sup></b>

# STRATO® Merino

# SMM

SMM 801 - 814

A striking textured metallic pattern that is linen like. Strato® Merino not only can suit elegant but also rustic designs.

## Appearance

Low Sheen	<input type="radio"/>	<input type="radio"/>	<input type="radio"/>	<input checked="" type="radio"/>	<input type="radio"/>	High Sheen
Smooth Texture	<input type="radio"/>	<input type="radio"/>	<input type="radio"/>	<input type="radio"/>	<input checked="" type="radio"/>	Rough Texture
Matte	<input type="radio"/>	<input type="radio"/>	<input type="radio"/>	<input type="radio"/>	<input checked="" type="radio"/>	Metallic

## Features



Low VOC & Odor



Green Choice, Water Based & Eco-friendly



Formaldehyde & Lead Free



Easy Application & DIY Friendly



Applicable on Ceiling



Easy to Touch Up



Easy Maintenance



Metallic Finish

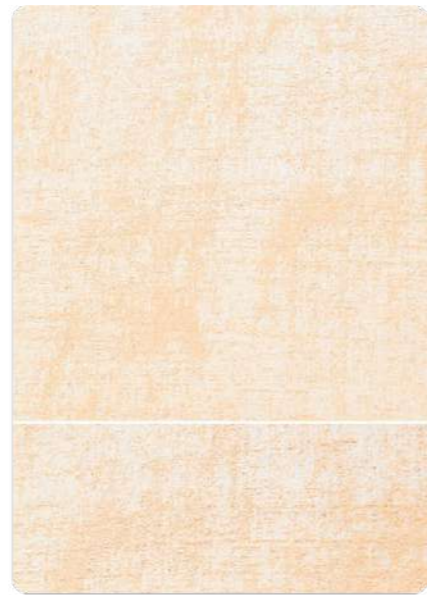
• Interior use only



**SMM-801** Crystal White



**SMM-802** Vanilla White



**SMM-803** Light Beige



**SMM-804** Dewy Rose



**SMM-805** Peach Passion



**SMM-806** Dusty Mauve



**SMM-807** Tippy Taupe



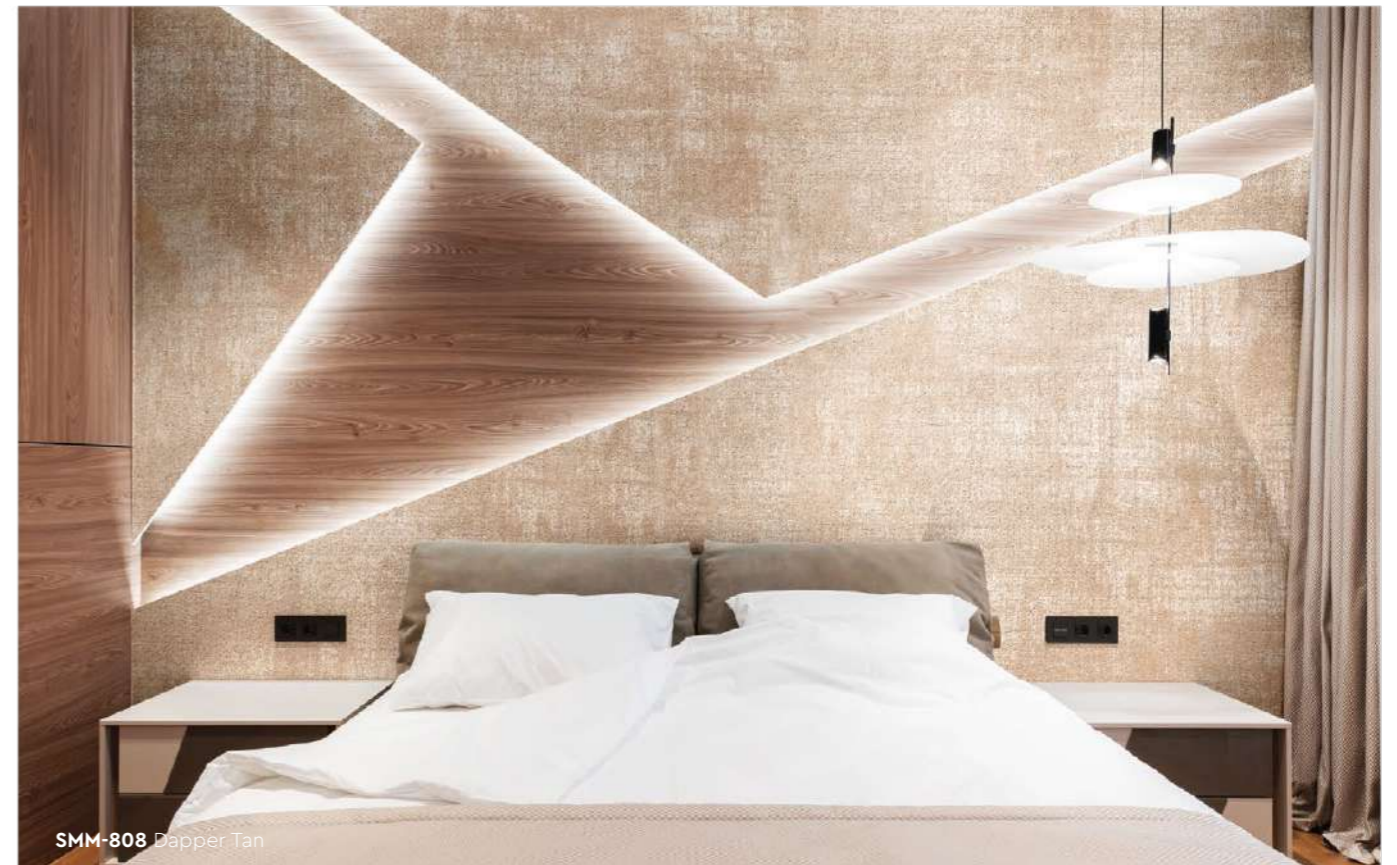
**SMM-808** Dapper Tan

All color shown are as close to the actual Suzuka® Strato® colors as modern printing techniques permit, nonetheless, there are still color/tone differences.

**We highly recommend seeing actual samples before ordering.**



**SMM-811** Frost Grey



**SMM-808** Dapper Tan



SMM-811 Frost Grey



SMM-801 Crystal White



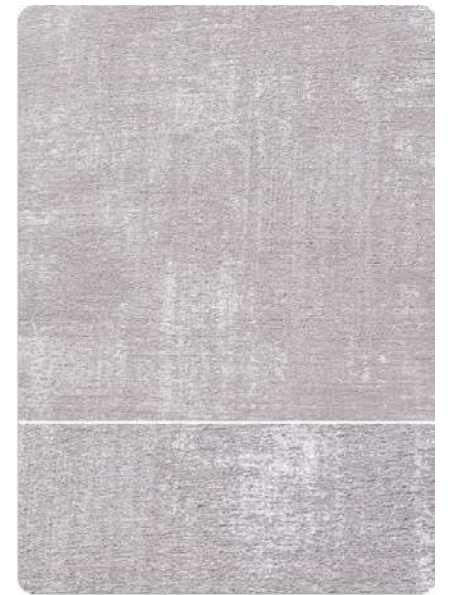
SMM-810 Lilac Grey



SMM-805 Peach Passion



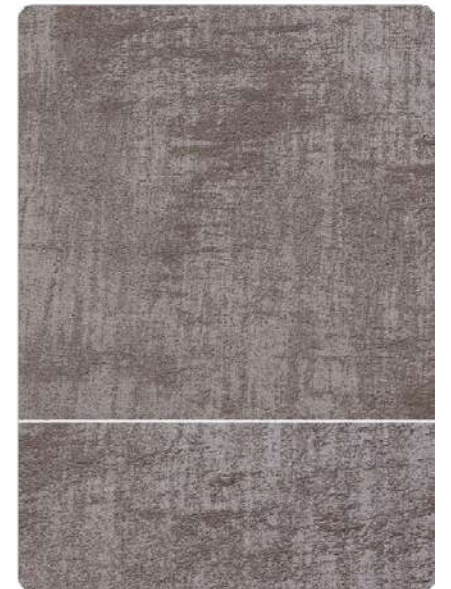
SMM-809 Lime Grey



SMM-810 Lilac Grey



SMM-811 Frost Grey



SMM-812 Suede Grey



SMM-813 Rocky Grey



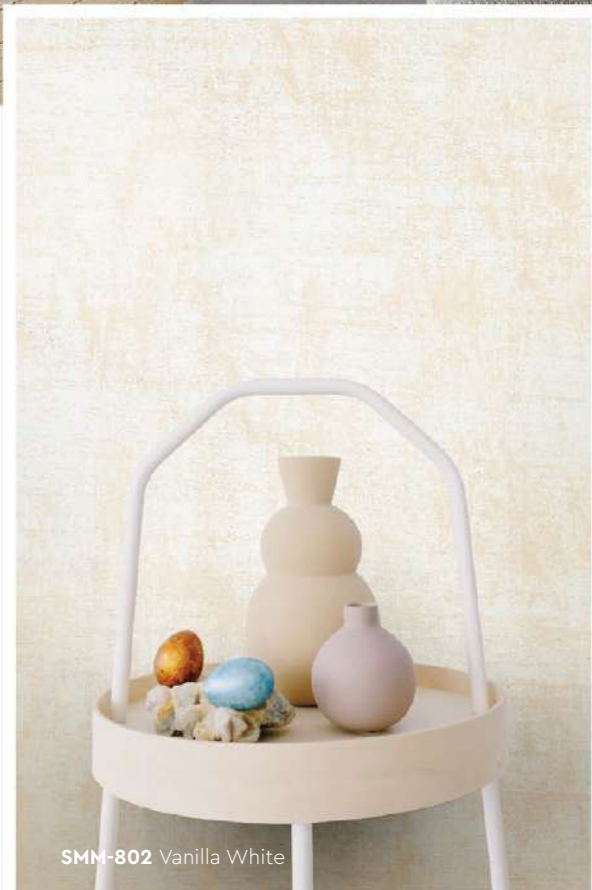
SMM-814 Dark Rust

All color shown are as close to the actual Suzuka® Strato® colors as modern printing techniques permit, nonetheless, there are still color/tone differences.

**We highly recommend seeing actual samples before ordering.**



SMM-814 Dark Rust



SMM-802 Vanilla White



SMM-811 Frost Grey

Strato® Merino

# Application Technique

Application Video



Preparation:

- Cover the edges of surface that won't be painted by masking it with tape, paper or plastic.
- Clean up the wall surface to ensure it is free from dirt and dust.



## 1 Primer

Roll 2 layers of primer on the entire surface. Allow 30 minutes to dry between the layers. (The primer can be diluted with maximum 5% of clean water)

**Tool:** Roller



## 2 Sanding

Sand the entire surface in circular motion to ensure the surface is smooth.

**Tool:** 600 Grit Sand Paper



## 3 Texture Coat

### Texture Coat (First Layer)

First, brush texture coat horizontally on the surface. Let dry for 30 - 40 minutes.



### Texture Coat (Second Layer)

Next, brush texture coat vertically on the surface. Let dry for 30 - 40 minutes.

**Tool:** Brush

### IMPORTANT:

Color may vary on application technique & amount of material used.

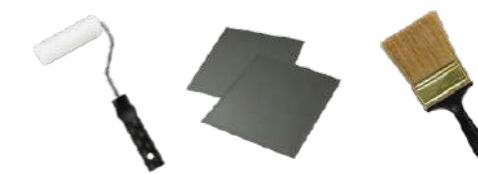


## Packing Data

1 L	Primer
1 L	Texture Coat

Coverage (per set)

WALL	3 - 4 sqm
CEILING	2.5 - 3.5 sqm



**Tools:** Roller, Sand Paper (600 Grit) & Brush

STRATO®  
*Organza*



# SMO

**SMO 701 - 717**

A smooth textured pattern with rich and creamy metallic finish that is suitable for all interior designs.

## Appearance

Low Sheen	<input type="radio"/>	<input type="radio"/>	<input type="radio"/>	<input checked="" type="radio"/>	<input type="radio"/>	High Sheen
Smooth Texture	<input checked="" type="radio"/>	<input type="radio"/>	<input type="radio"/>	<input type="radio"/>	<input type="radio"/>	Rough Texture
Matte	<input type="radio"/>	<input type="radio"/>	<input type="radio"/>	<input type="radio"/>	<input checked="" type="radio"/>	Metallic

## Features



Low VOC & Odor



Green Choice, Water Based & Eco-friendly



Formaldehyde & Lead Free



Easy Application & DIY Friendly



Applicable on Ceiling



Easy to Touch Up



Easy Maintenance



Metallic Finish

• Interior use only



**SMO-701** Floral Beige



**SMO-702** Sandy Beige



**SMO-703** Lotus Blossom



**SMO-704** Lavender



**SMO-705** Space Grey



**SMO-706** Pewter Grey



**SMO-707** Blue Ash



**SMO-708** Antique Blue

All color shown are as close to the actual Suzuka® Strato® colors as modern printing techniques permit, nonetheless, there are still color/tone differences.

**We highly recommend seeing actual samples before ordering.**



**SMO-703** Lotus Blossom







**SMO-705** Space Grey

**SMO-702** Sandy Beige

All color shown are as close to the actual Suzuka® Strato® colors as modern printing techniques permit, nonetheless, there are still color/tone differences.

**We highly recommend seeing actual samples before ordering.**



**SMO-709** Lava Grey



**SMO-710** Plum Violet



**SMO-711** Dark Amber



**SMO-712** Antique Wood



**SMO-713** Pale Mustard



**SMO-714** Olive Garden



**SMO-715** Seal Grey



**SMO-716** Fossil Grey



**SMO-717** Sage Green



SMO-715 Seal Grey



SMO-713 Pale Mustard

SMO-714 Olive Garden

Strato® Organza

# Application Technique

Application Video



Preparation:

- Cover the edges of surface that won't be painted by masking it with tape, paper or plastic.
- Clean up the wall surface to ensure it is free from dirt and dust.

**IMPORTANT:**

Color may vary on application technique & amount of material used.



**Tools:** Roller, Sand Paper (600 Grit) Trowel & Piccolo Tool



## 1 Primer

Roll 2 layers of primer on the entire surface. Allow 30 minutes to dry between the layers. (The primer can be diluted with maximum 5% of clean water)

**Tool:** Roller

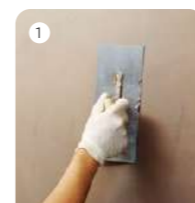


## 2 Sanding

Sand surface with sandpaper (600 grit) to ensure a smooth surface.

**Tool:** 600 Grit Sand Paper

Texture Coat Options



## 3A Texture Coat Piccolo Pattern

**Texture Coat (First Layer)**

(1) scrape texture coat evenly on the surface. (2) Use piccolo tool to create texture effects by moving with random motion. Let dry for 30 to 40 minutes.



**Texture Coat (Second Layer)**

Repeat the steps for a second layer of texture coat. Let dry for 30 to 40 minutes.

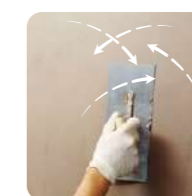
**Tool:** Trowel & Piccolo Tool



## 3B Texture Coat Trowel Pattern

**Texture Coat (First Layer)**

Scrape texture coat evenly on the surface. Let dry for 30 to 40 minutes.



**Texture Coat (Second Layer)**

Scrape texture coat randomly on the surface to create texture. Let dry for 30 to 40 minutes.

**Tool:** Trowel



Piccolo Pattern



Trowel Pattern



## Packing Data

1 L	Primer
1 L	Texture Coat

\* Piccolo tool is sold separately

**Coverage** (per set)

WALL	6 - 7 sqm
CEILING	5 - 6 sqm